

PART OF WEST 1/2 OF SEC. 24 T.5N., R.1W., S.L.B.& M.

255

EASTWOOD SUBDIVISION NO. 10

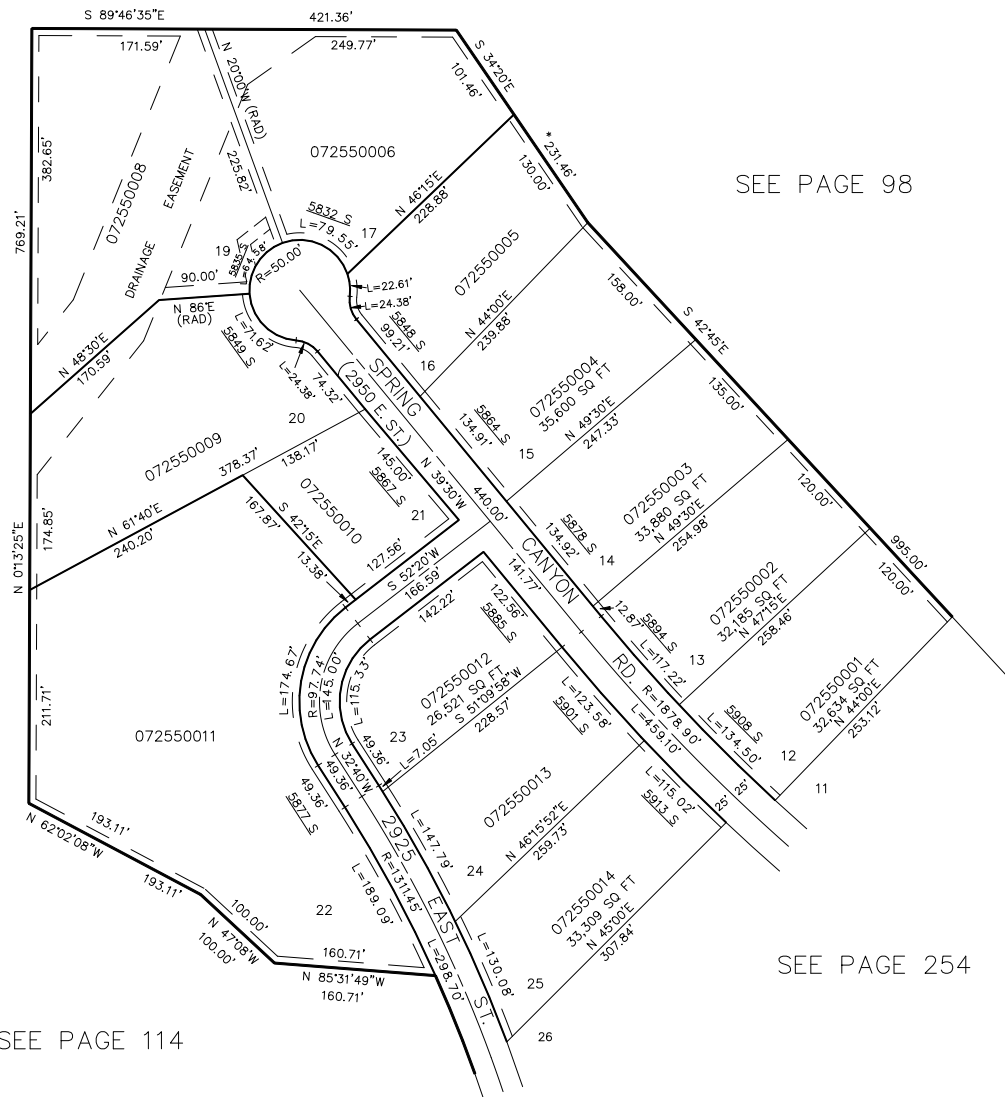
LOTS 12-16, 20, 21

AMENDED LOTS 17-19, 22-25

IN WEBER COUNTY

TAXING UNIT: 159

SCALE 1"=100'



SEE PAGE 86

SEE PAGE 98

SEE PAGE 254

SEE PAGE 114

7' UTILITY & DRAINAGE EASEMENTS
EACH SIDE OF PROPERTY LINE
AS INDICATED BY DASHED LINES,
EXCEPT AS OTHERWISE SHOWN.

FOR COMPLETE ENG. DATA SEE
ORIGINAL DEDICATION PLAT IN
BOOK 22, PAGES 74 & 75.
*AMENDED BOOK 23, PAGE 49.